

# ESTIVAL

**A**  $\text{♩} = 63$

Guitare 1

Guitare 2

Guitare 3

Guitare 4

Shakers

Guit. 1

Guit. 2

Guit. 3

Guit. 4

Sh.

8

Guit. 1

Guit. 2

Guit. 3

Guit. 4

Sh.

12

Guit. 1

Guit. 2

Guit. 3

Guit. 4

Sh.

12

15

Guit. 1

Guit. 2

Guit. 3

Guit. 4

Sh.

18

Guit. 1

Guit. 2

Guit. 3

Guit. 4

Sh.

**B**

22

Guit. 1

Guit. 2

Guit. 3

Guit. 4

Sh.

26

Guit. 1

Guit. 2

Guit. 3

Guit. 4

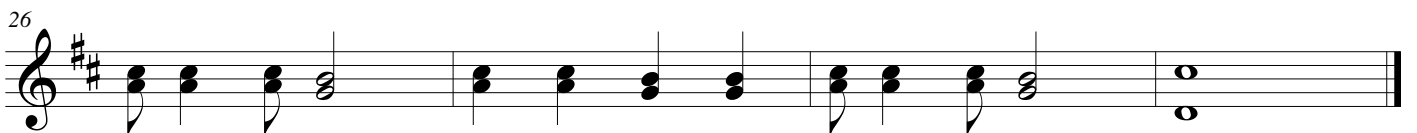
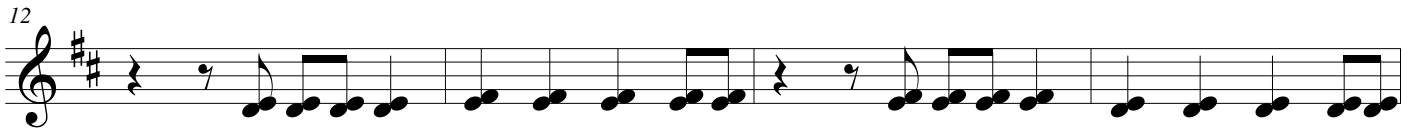
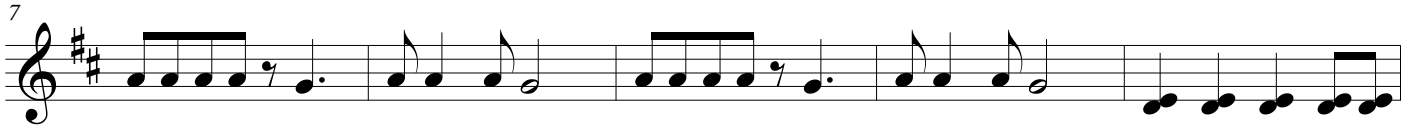
Sh.



# ESTIVAL

JP ROUBAUD

**A**  $\text{♩} = 63$



# ESTIVAL

JP ROUBAUD

**A** ♩ = 63

Musical notation for measures 1-4 of section A. The key signature has two sharps (F# and C#). The time signature is 2/4. The notation includes a treble clef, a key signature of two sharps, and a tempo marking of ♩ = 63. The music consists of a sequence of chords and eighth notes. Measure 1 starts with a 2/4 time signature. Measure 4 ends with a 3/4 time signature.

Musical notation for measures 5-8 of section A. The key signature has two sharps (F# and C#). The time signature is 4/4. The notation includes a treble clef, a key signature of two sharps, and a tempo marking of ♩ = 63. The music consists of a sequence of chords and eighth notes. Measure 5 starts with a 4/4 time signature. Measure 8 ends with a 3/4 time signature.

Musical notation for measures 9-12 of section A. The key signature has two sharps (F# and C#). The time signature is 2/4. The notation includes a treble clef, a key signature of two sharps, and a tempo marking of ♩ = 63. The music consists of a sequence of chords and eighth notes. Measure 9 starts with a 2/4 time signature. Measure 12 ends with a 3/4 time signature.

Musical notation for measures 13-16 of section A. The key signature has two sharps (F# and C#). The time signature is 4/4. The notation includes a treble clef, a key signature of two sharps, and a tempo marking of ♩ = 63. The music consists of a sequence of chords and eighth notes. Measure 13 starts with a 4/4 time signature. Measure 16 ends with a 3/4 time signature.

**B**

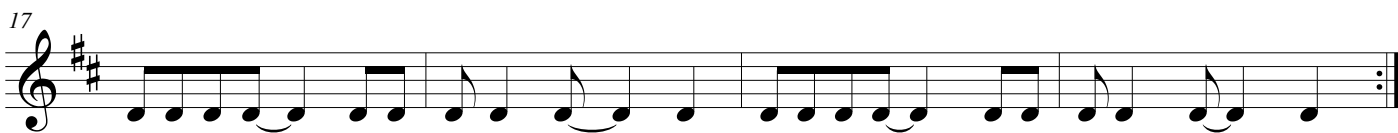
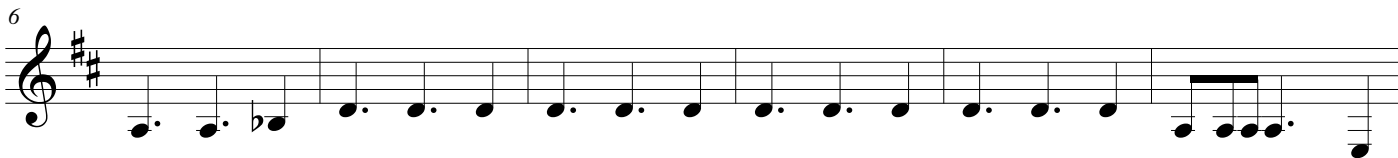
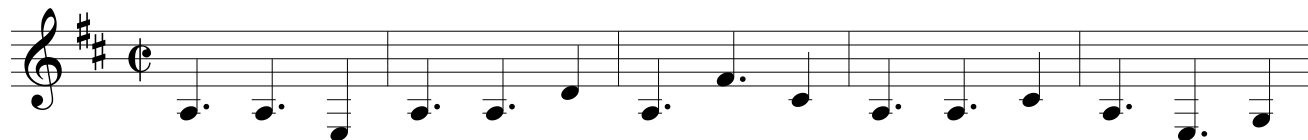
Musical notation for measures 17-19 of section B. The key signature has two sharps (F# and C#). The time signature is 4/4. The notation includes a treble clef, a key signature of two sharps, and a tempo marking of ♩ = 63. The music consists of a sequence of chords and eighth notes. Measure 17 starts with a 4/4 time signature. Measure 19 ends with a 3/4 time signature.

Musical notation for measures 20-24 of section B. The key signature has two sharps (F# and C#). The time signature is 4/4. The notation includes a treble clef, a key signature of two sharps, and a tempo marking of ♩ = 63. The music consists of a sequence of chords and eighth notes. Measure 20 starts with a 4/4 time signature. Measure 24 ends with a 3/4 time signature.

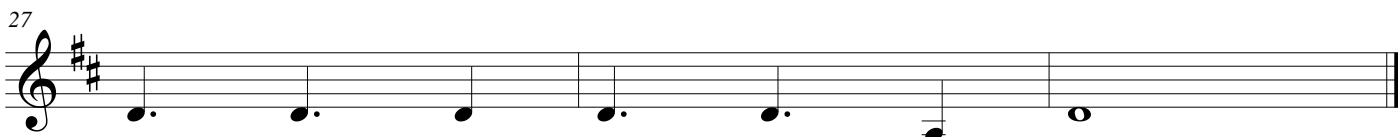
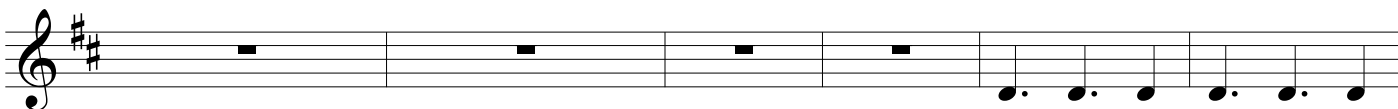
# ESTIVAL

JP ROUBAUD

**A** ♩ = 63



**B**





Shakers

# ESTIVAL

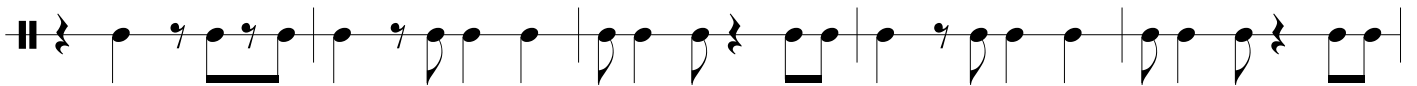
( Ou maracas, tambourin, etc...)

JP ROUBAUD

**A**  $\text{♩} = 63$



6

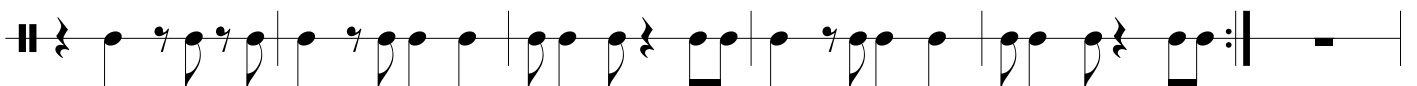


11

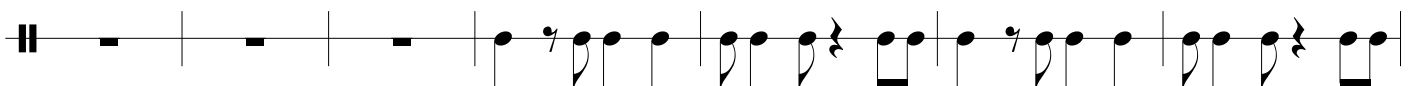


**B**

16



22



29

