

HISTORIA DE UN AMOR

Carlos Eleta ALMARAN

Arr. : JP ROUBAUD

♩ = 50

Alto

Ya no es tas a mi

Mandoline 1

Mandoline 2

Mandola

Violon

Piano

Guitare 1

Guitare 2

Guitare 3

Violoncelle

A

A lado corazon Enelamasolo ten go soledad Ysiyanpuelo ver tePorqu Diosmezoquerqta hacernsufir mas?

Mand. 1 *mp*

Mand. 2 *mp*

VI. *mp*

Pno

Guit. 1 *mf*

Guit. 2 *mp*

Guit. 3 *mf*

Vlc. *mf*

Dm7 E7 Am7 Am6 G7 F7 E7

Detailed description of the musical score: The score is for a piece titled 'Historia de un Amor'. It features a vocal line (A) with lyrics: 'lado corazon Enelamasolo ten go soledad Ysiyanpuelo ver tePorqu Diosmezoquerqta hacernsufir mas?'. The instrumental parts include Mandolin 1 and 2 (Mand. 1, 2) in treble clef with a mezzo-piano (*mp*) dynamic. Violin (VI.) in treble clef with a mezzo-piano (*mp*) dynamic. Piano (Pno) in grand staff with a mezzo-forte (*mf*) dynamic. Guitar 1 (Guit. 1) in treble clef with a mezzo-forte (*mf*) dynamic. Guitar 2 (Guit. 2) in treble clef with a mezzo-piano (*mp*) dynamic. Guitar 3 (Guit. 3) in treble clef with a mezzo-forte (*mf*) dynamic. Viola (Vlc.) in bass clef with a mezzo-forte (*mf*) dynamic. Chords are indicated below the piano and guitar parts: Dm7, E7, Am7, Am6, G7, F7, E7. The score is marked with a first ending bracket (5) and includes dynamic markings like *mp*, *mf*, and *f*.

B

9

A

Sienpréuistelara zontlemèxistir Ado rartepara miuac'elgion Y'entusbesoy'eunon trabaElcaloquembrindaba Elamorylapas

Mand. 1

Mand. 2

VI.

Pno

Guit. 1

Guit. 2

Guit. 3

Vlc.

mp

mp

mp

mp

mp

mf

f

mf

mf

mf

Dm7 E7 Am7 Am6 G7 F^Δ E7

Dm7 E7 Bb7(b5) Am7 Am6 G7 F^Δ E7

mf

mf

mf

mf

C

13

A sion Eka'stoiadana morConno'haytro'guaQuene hizœpren dertalo'hientalo'ghalQude diduzami vi da Apagardolades

Mand. 1

Mand. 2

VI.

Am Bm7(b5) E7 Am7 Dm7 C7

Pno

Guit. 1

Guit. 2

Guit. 3

Vlc.

13

mf *f* *mf* *f* *mf* *f* *mf* *f*

Detailed description of the musical score: The score is for a piece titled 'Historia de un Amor'. It features a vocal line (A) and instrumental parts for Mandolin 1 and 2, Violin (VI.), Piano (Pno), and three Guitars (Guit. 1, 2, 3) and Violoncello (Vlc.). The music is in a 7/8 time signature. The vocal line starts at measure 13 with the lyrics 'sion Eka'stoiadana morConno'haytro'guaQuene hizœpren dertalo'hientalo'ghalQude diduzami vi da Apagardolades'. The instrumental parts include a mandolin melody, a violin line with a long note, piano accompaniment with chords, and guitar parts with various textures and effects. Chords are indicated above the piano and guitar staves: Am, Bm7(b5), E7, Am7, Dm7, C7, Am, Bm7(b5), E7(b5E7(#9)), Am7, Am6, Dm7, G7. Dynamics include *mf* and *f*. A box labeled 'C' is placed above the first measure of the vocal line.

17

A

pues Ayquévidataros cu ra Sintu amorvivi ré Yáo'esamasami ladoçorazon Enel almasolo

Mand. 1

Mand. 2

VI.

C^Δ F^Δ Dm7 Bm7(b5) B7 E7 Dm7 E7

Pno

C^Δ F^Δ Dm7 Bm7(b5) B7 E7 Dm7 E7 Bb7(b5)

Guit. 1

Guit. 2

Guit. 3

Vlc.

mf

mf

D

21

A

tengo soledad Y si ya no puedo verte Porque Dios me hizo quererte para hacerme sufrir mas

Mand. 1

Mand. 2

VI.

mp *mp* *mp* *pizz.*

Am7 Am6 Am6 G7 F^Δ E7 Am Dm7 E7

Pno

Guit. 1

Guit. 2

Guit. 3

Vlc.

mp *mp* *f* *solo*

Detailed description of the musical score: This page contains the musical score for the sixth measure of the piece 'Historia de un Amor'. The score is written for a vocal line (A) and several instrumental parts: Mandolin 1 and 2, Violin (VI.), Piano (Pno), and three Guitars (Guit. 1, 2, 3), plus a Violoncello (Vlc.). The vocal line begins with the lyrics 'tengo soledad Y si ya no puedo verte Porque Dios me hizo quererte para hacerme sufrir mas'. The instrumental parts are arranged in a multi-staff format. The Mandolin parts play a rhythmic accompaniment. The Violin part features a melodic line with dynamics ranging from mezzo-piano (mp) to pizzicato (pizz.). The Piano part provides harmonic support with chords. The three Guitars play a complex accompaniment, with the third guitar (Guit. 3) having a 'solo' section marked with a forte (f) dynamic. The Violoncello part provides a bass line. The key signature is D major, indicated by a 'D' in a box at the top right. The measure number '21' is written at the beginning of each staff.

25

A

Mand. 1

Mand. 2

VI.

Pno

Guit. 1

Guit. 2

Guit. 3

Vlc.

Am7 Am6 G7 F7 E7

arco

mf

mp

f

Detailed description: This page of a musical score for 'Historia de un Amor' features seven staves. The top staff (A) is mostly empty with a measure rest. Mandolin 1 and 2 (Mand. 1, 2) play a rhythmic pattern in the final measure, marked *mf*. Violin (VI.) plays a melodic line with a *mp* dynamic and an *arco* instruction. Piano (Pno) provides harmonic support with chords Am7, Am6, G7, F7, and E7. Three guitar parts (Guit. 1, 2, 3) are present: Guit. 1 has a complex melodic line with the same chord sequence; Guit. 2 plays a rhythmic accompaniment; Guit. 3 plays a melodic line. The Violoncello (Vlc.) part is in the bass clef, playing a simple harmonic line. The score concludes with a final measure rest on the A staff.

E

A

Esla' storia de un a

Mand. 1

Mand. 2

VI.

mp

Pno

Dm7 E7 Am7 G7 F^Δ E7 Am

Guit. 1

mf

Dm7 E7 E7(b5) Am7 Am6 G7 F^Δ E7 Am

Guit. 2

mp

Guit. 3

mf

Vlc.

Detailed description of the musical score: The score is for a piece titled 'HISTORIA DE UN AMOR'. It begins with a key signature of one sharp (F#) and a common time signature. The vocal line (A) starts with a rest and then enters with the lyrics 'Esla' storia de un a'. The instrumental parts include two mandolins (Mand. 1 and Mand. 2) playing a rhythmic melody, a violin (VI.) playing a similar melodic line, a piano (Pno) providing harmonic support with chords and bass line, and three guitars (Guit. 1, 2, and 3) playing various textures. The viola (Vlc.) part is in the bass clef. The score includes dynamic markings such as *mp* (mezzo-piano) and *mf* (mezzo-forte). Chord symbols are provided for the piano and guitar parts, including Dm7, E7, Am7, G7, F^Δ, E7, Am, and Am6. The score is marked with a rehearsal sign 'E' and a measure number '29'.

F

A

mor Como' hay trojeua Que me hiz ompren der Tdo' bien Tdo' cha Que de diduzami vi da Apagan lo laes pues Ay que vidtams

Mand. 1

Mand. 2

VI.

Pno

Guit. 1

Guit. 2

Guit. 3

Vlc.

33

mf *f* *mf* *f* *mf* *f*

Bm7(b5) E7 Am7 Dm7 G7 C^Δ F^Δ

Bm7(b5) E7(b9) Am7 Am6 Dm7 G7 C^Δ F^Δ

Detailed description: This is a page of a musical score for the song 'Historia de un Amor'. It features a vocal line at the top with lyrics in Spanish. Below the vocal line are staves for Mandolin 1 and 2, Violin, Piano, and three Guitars. The score includes dynamic markings such as *mf* and *f*, and various musical notations including slurs, accents, and fermatas. Chord symbols are provided below the Violin and Piano staves. The page is numbered 9 and includes a section marker 'F' in a box at the top left.

37

A

cu ra Sirti'anomo vivi ré Yao'etasnasami lado corazon Enel almasolo tengosoledad ysi'yaquadover

Mand. 1

Mand. 2

VI.

Dm7 Bm7 B7 E7 Dm7 E7 Am7 Am6

Pno

Guit. 1

Guit. 2

Guit. 3

Vlc.

Detailed description of the musical score: The score is for a piece titled 'Historia de un Amor'. It features a vocal line (A) and instrumental parts for Mandolin 1 and 2, Violin (VI.), Piano (Pno), and three Guitars (Guit. 1, 2, 3) and Violoncello (Vlc.). The vocal line starts at measure 37 with the lyrics 'cu ra Sirti'anomo vivi ré Yao'etasnasami lado corazon Enel almasolo tengosoledad ysi'yaquadover'. The instrumental parts are arranged in a multi-staff format. The Mandolin parts (Mand. 1 and 2) and Violin part (VI.) include dynamic markings such as *f* and *mf*. The Piano part (Pno) includes chord symbols: Dm7, Bm7, B7, E7, Dm7, E7, Am7, and Am6. The Guitars (Guit. 1, 2, 3) and Violoncello (Vlc.) parts also include dynamic markings and chord symbols. The score is written in a standard musical notation with treble and bass clefs.

41

A

te Por qué Dios me'hi zo que rer te Pa ra' hacer me su frir mas?

Mand. 1

mp

Mand. 2

mp

VI.

mp *pp*

G7 Am

Pno

mp *pp*

Guit. 1

G7 F^Δ E7 Am Am(add 9)

mf *mp* *pp*

Guit. 2

mp *pp*

Guit. 3

mp *pp*

Vlc.

mp *pp*

Alto

HISTORIA DE UN AMOR

Carlos Eleta ALMARAN

Arr. : JP ROUBAUD

$\text{♩} = 50$



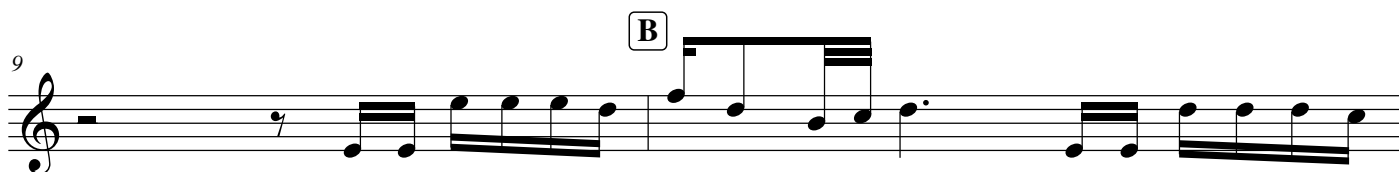
Ya no es tas a mi la do co ra zon En el al ma so lo

6




ten go so le dad Y si ya no pue do ver te Por que Dios me zo queretpa ra hacerm su frir mas?

9



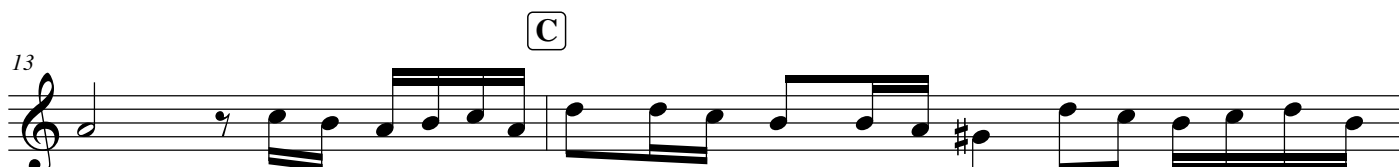
Siem pre fuis te la ra zon de mi exis tir A do rar te pa ra

11



mi fue re li gion Y'en tus be sos yo'en con tra ba El ca lor que me brin da ba El a mor y la pas

13



sion Es la'sto ria de un a mor Co mo no'hay o tro'i gual Que me hi zo com pren

15



der to do'el bien to do'el mal Que le dio luz a mi vi da A pa gan do la des

17



pues Ay, qué vi da tan os cu ra Sin tu a mor vi vi ré Ya no'es tas mas a mi

20

la do, co ra zon En el al ma so lo ten go so le dad Y si'ya no pue do ver

22

te Por que Dios me'hi zo que rer te pa ra'ha cerme su frir mas

32

Es la'sto ria de un a mor Co mo no'hay o tro'i gual Que me hi zo com pren

34

der To do'el bien To do'el mal Que le dio luz a mi vi da A pa gan do la des

36

pues Ay, qué vi da tan os cu ra Sin tí'a mor no vi vi ré Ya no'es tas mas a mi

39

la do, co ra zon En el al ma so lo ten go so le dad y si'ya no pue do ver

41

te Por qué Dios me'hi zo que rer te Pa ra'ha cerme su frir mas?

HISTORIA DE UN AMOR

Carlos Eleta ALMARAN

Arr. : JP ROUBAUD

♩ = 50

A

4

mp

B

mp

C

mf

16

f

22

D

4

mp

E

mf

30

F

mf

34

f

f

39

mf

mp

2

HISTORIA DE UN AMOR

Carlos Eleta ALMARAN

Arr. : JP ROUBAUD

♩ = 50

A

mp

B

mp *mf*

16

f *mf*

22

D

mp *mf*

30

E

mf

35

F

f *mf*

41

mp

HISTORIA DE UN AMOR

Carlos Eleta ALMARAN

Arr. : JP ROUBAUD

♩ = 50

A **B**

mp *mp*

11 **C**

mf *f*

18 **D**

mf *mp*

E **F**

mp *mf*

35

f *mf* *mp*

42 **2**

HISTORIA DE UN AMOR

Carlos Eleta ALMARAN

Arr. : JP ROUBAUD

♩ = 50

A

mp

7 **B**

mp

13 **C**

D *pizz.*

20 *mp*

26 *arco* **E**

mp

30 **F**

35 *mf* *mp*

42 *pp*

PIANO

HISTORIA DE UN AMOR

Carlos Eleta ALMARAN

Arr. : JP ROUBAUD

$\text{♩} = 50$

Dm7 E7

A

Piano

mp

4/4

This system contains the first four measures of the piano accompaniment. The right hand starts with a treble clef and a key signature of one sharp (F#). The left hand starts with a bass clef. The first measure is a whole note chord of Dm7. The second measure is a whole note chord of E7. The third and fourth measures contain eighth notes and quarter notes. A box labeled 'A' is placed above the first measure of the second system.

Am7 Am6 G7 F7 E7

Dm7 E7

B

Pno

6

This system contains measures 5 through 8. Measure 5 has a whole note chord of Am7. Measure 6 has a whole note chord of Am6. Measure 7 has a whole note chord of G7. Measure 8 has a whole note chord of F7. Measure 9 has a whole note chord of E7. Measure 10 has a whole note chord of Dm7. Measure 11 has a whole note chord of E7. A box labeled 'B' is placed above measure 10.

Am7 Am6 G7 F Δ E7 Am

Bm7(b5) E7 Am7

C

Pno

11

mp

This system contains measures 12 through 15. Measure 12 has a whole note chord of Am7. Measure 13 has a whole note chord of Am6. Measure 14 has a whole note chord of G7. Measure 15 has a whole note chord of F Δ . Measure 16 has a whole note chord of E7. Measure 17 has a whole note chord of Am. Measure 18 has a whole note chord of Bm7(b5). Measure 19 has a whole note chord of E7. Measure 20 has a whole note chord of Am7. A box labeled 'C' is placed above measure 18.

Dm7 C7 G Δ F Δ

Dm7 Bm7(b5) B7 E7

Dm7 E7

Pno

16

This system contains measures 16 through 20. Measure 16 has a whole note chord of Dm7. Measure 17 has a whole note chord of C7. Measure 18 has a whole note chord of G Δ . Measure 19 has a whole note chord of F Δ . Measure 20 has a whole note chord of Dm7. Measure 21 has a whole note chord of Bm7(b5). Measure 22 has a whole note chord of B7. Measure 23 has a whole note chord of E7. Measure 24 has a whole note chord of Dm7. Measure 25 has a whole note chord of E7.

Am7 Am6 Am6 G7 F Δ E7 Am

Dm7 E7 Am7 Am6

D

Pno

21

This system contains measures 21 through 25. Measure 21 has a whole note chord of Am7. Measure 22 has a whole note chord of Am6. Measure 23 has a whole note chord of Am6. Measure 24 has a whole note chord of G7. Measure 25 has a whole note chord of F Δ . Measure 26 has a whole note chord of E7. Measure 27 has a whole note chord of Am. Measure 28 has a whole note chord of Dm7. Measure 29 has a whole note chord of E7. Measure 30 has a whole note chord of Am7. Measure 31 has a whole note chord of Am6. A box labeled 'D' is placed above measure 28.

26 G7 F7 E7 Dm7 E7 Am7

Piano accompaniment for measures 26-30. The music is in a 4/4 time signature. Measure 26 starts with a G7 chord. Measure 27 has F7 and E7 chords. Measure 28 has a boxed 'E' above the staff. Measure 29 has Dm7 and E7 chords. Measure 30 has an Am7 chord. The bass line consists of quarter notes and eighth notes.

31 G7 F^Δ E7 Am Bm7(b5) E7 Am7 Dm7 G7

Piano accompaniment for measures 31-35. Measure 31 has G7, F^Δ, and E7 chords. Measure 32 has Am and Bm7(b5) chords, with a boxed 'F' above the staff. Measure 33 has E7 and Am7 chords. Measure 34 has Dm7 and G7 chords. Measure 35 has a G7 chord. The bass line features a melodic line in measure 32.

36 C^Δ F^Δ Dm7 Bm7 B7 E7 Dm7 E7 Am7 Am6

Piano accompaniment for measures 36-40. Measure 36 has C^Δ and F^Δ chords. Measure 37 has Dm7, Bm7, and B7 chords. Measure 38 has E7 and Dm7 chords. Measure 39 has E7 and Am7 chords. Measure 40 has an Am6 chord. The bass line has a melodic line in measure 38.

41 G7 Am

Piano accompaniment for measures 41-45. Measure 41 has a G7 chord. Measure 42 has an Am chord. Measure 43 has an Am chord with a *mp* dynamic marking. Measure 44 has an Am chord. Measure 45 has an Am chord with a *pp* dynamic marking. The piece ends with a double bar line.

HISTORIA DE UN AMOR

Carlos Eleta ALMARAN

Arr. : JP ROUBAUD

♩ = 50

A

4

Dm7 E7 Am7 Am6

mf

7

G7 F7 E7

mf

B

V

Dm7 E7 Bb7(b5) Am7 Am6 G7 FΔ E7

mf

C

13

Am Bm7(b5) E7(b5) E7(#9) Am7 Am6

mf

16

Dm7 G7 CΔ FΔ Dm7 Bm7(b5) B7 E7

f

20

Dm7 E7 Bb7(b5) Am7 Am6 G7 FΔ E7

mf

HISTORIA DE UN AMOR

2

23 **D**
Am Dm7 E7
mp

25 Am7 Am6 G7 F7 E7

28 **E**
Dm7 E7 E7(b5) Am7 Am6 G7 FΔ E7
mf

32 **F**
Am Bm7(b5) E7(b9) Am7 Am6
mf

35 Dm7 G7 CΔ FΔ Dm7 Bm7 B7 E7
f *mf*

39 Dm7 E7 Am7 Am6 G7 FΔ E7
mf *mf* BV-----

42 Am Am(add9)
pp

HISTORIA DE UN AMOR

Carlos Eleta ALMARAN

Arr. : JP ROUBAUD

$\text{♩} = 50$
mp

A

7 *f* **B**

11 **C**

16 **D**

21 *mp* **E**

26 *f* *mp* **F**

30

35

40 *mp* *pp*

HISTORIA DE UN AMOR

Carlos Eleta ALMARAN

Arr. : JP ROUBAUD

A

$\text{♩} = 50$
mp 4

mf

B

mf

C

mf

16

mf

18

VII

mf

21

D

solo

f

25

mf

E tutti

mf

F

mf

35

f

37

VII

mf

40

V

mp

pp

HISTORIA DE UN AMOR

Carlos Eleta ALMARAN

Arr. : JP ROUBAUD

♩ = 50

A



B



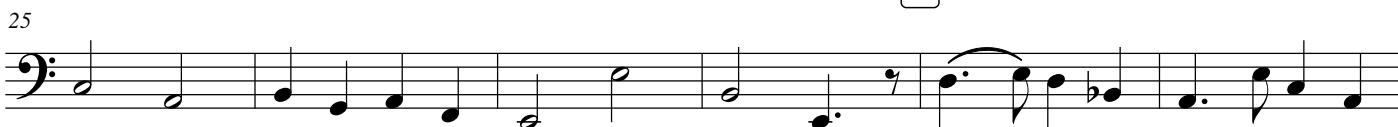
C



D



E



F



37



43

