

(papa) SOL LA SI DO RE MI FA SOL (petit)

A musical staff in treble clef showing a sequence of seven whole notes: SOL, LA, SI, DO, RE, MI, FA, SOL. The notes are positioned on the lines of the staff from bottom to top. The labels are written above the notes. The first 'SOL' is marked '(papa)' and the final 'SOL' is marked '(petit)'.

- ① je lis les notes dans la tête
- ② je les prononce à voix haute

2

A musical staff in treble clef containing four measures of music. Each measure contains two whole notes. A slur is drawn over the first two notes of the first measure.

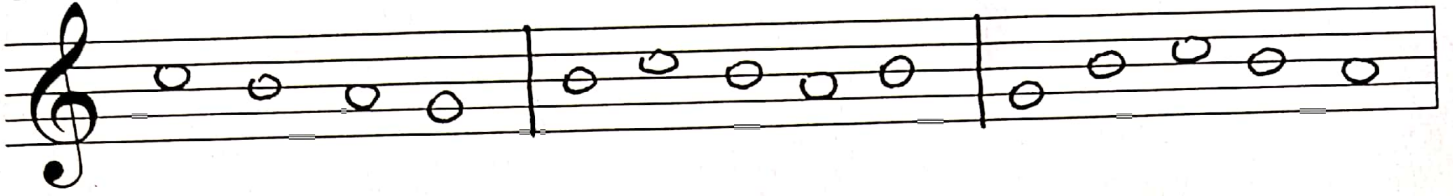
3

A musical staff in treble clef containing four measures of music. Each measure contains two whole notes. Vertical bar lines separate the measures.

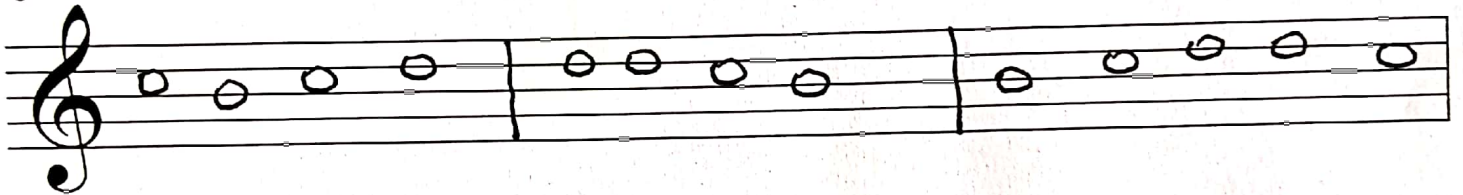
4

A musical staff in treble clef containing four measures of music. Each measure contains two whole notes. Vertical bar lines separate the measures.

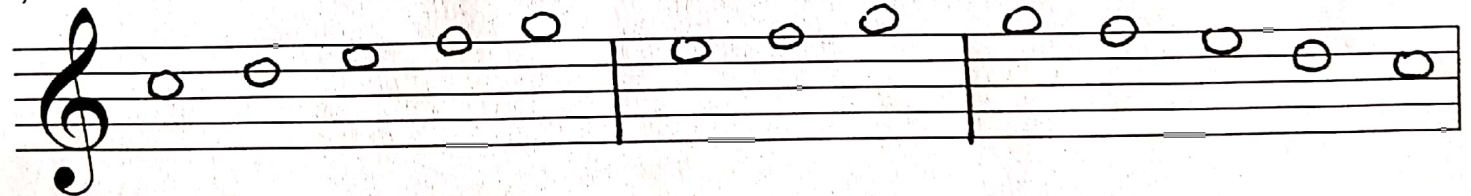
5



6



7



8

